

ROBE®

proMOTION™

HIGH
POWER
LED
SOURCE

EASY
CONTENT
MANAGEMENT

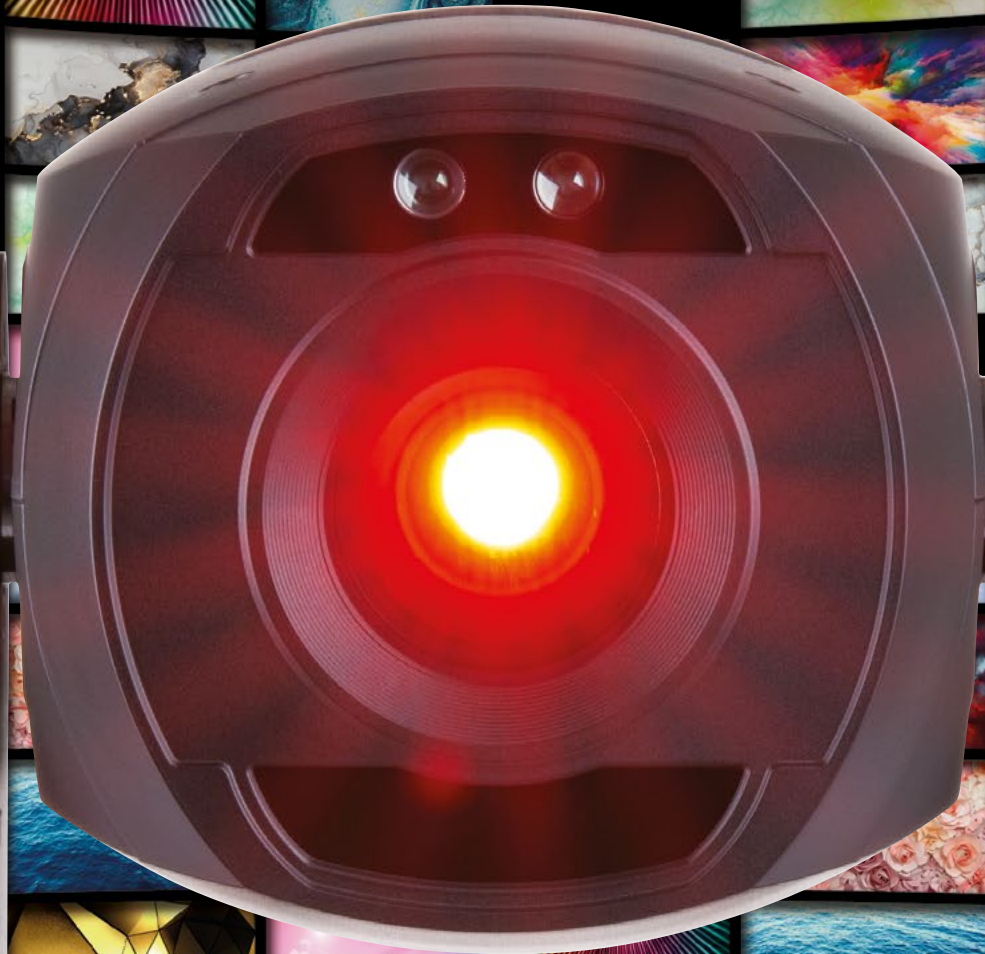
DIGITAL
GOBO & EFFECT
WHEELS

EMBEDDED
MICRO-MEDIA
SERVER

FULL
HD
RESOLUTION

proMOTION™

EASY TO
CONTROL - ONLY
25 DMX
CHANNELS



Automatic Distance Meter



ADM™ (Automatic Distance Meter) is a unique technology based on an invisible spectrum source of light and set of sensors, to provide very precise distance information.

This technology works perfectly with almost every possible surface, and helps the operator to maintain a sharp projection during dynamic pan and tilt movement.

Autofocusing in real time is now a feature bringing ProMotion™ to an even higher technological level.

Two sets of base covers

ProMotion™ is supplied with two sets of base covers. The first set is suitable for stage applications, while the second set hides control display and cables at the back of the base for the retail and installation market.



proMOTION™

Take your bar, club and retail promotions to the next level with the futuristic Robe ProMotion™ moving head effects and video projector.

Compact, stylish yet fast moving, this projector produces 1000 ANSI Lumens of creative output with its long-lasting LED source. With RGB and CMY colour mixing capability; digital gobos and graphic effects images and videos; dynamic range of in-built effects, the only limit is your creativity.

The ability to upload custom artwork, photographs and videos is enhanced by the live streaming input facility from external high definition multimedia interfaces. With keystone, iris and motorised focus, you have total control of your visual creations.

Supplied with two sets of base covers, the first set is suitable for stage applications, while the second set hides control display and cables at the back of the base making it ideal for the retail and installation market.

ProMotion™ can be optionally equipped with an ADM™ Automatic Distance Meter, to keep the projection absolutely sharp and focused automatically without any user alteration.



Source

- Light source type: RGB LED device
- Lifetime: 20,000 hours
- Eco mode - extended life time of LED source

Projector Specification

- Light output: 1000 ANSI lumens
(Comparable with 5000 ANSI lumen lamp projectors)
- Aspect ratio: 16:9
- Resolution: 1920 x 1080
- Beam angle: 17°
- Throw ratio: 3.5:1
- Contrast ratio: 500:1
- Display colours: 16.7 million colours
- Optional wide lens: 26°
- Throw ratio wide lens: 2.3:1

Main Features

- Colour mixing mode RGB/CMY
- White light: Variable CCT 3.200K - 9.500K
- Colour effect wheel with wide range of in-built effects (colour transitions and cross-fades, multiple colour images, rainbow effects)
- Digital gobo wheel 1: with standard gobos, images and videos
- Digital gobo wheel 2: with user's gobos, images and videos
- Gobo rotation and indexing
- Video on/off and speed control
- Live input via external High Definition Multimedia Interface
- Effect wheel with wide range of graphic effects (Kaleidoscopic effect, fish eye, iris, zoom, swirl effect, pixelation effect, cross-stitching, posterization, and more...)
- Effect speed control
- Horizontal/Vertical keystoneing
- ADM™ Automatic distance meter - on request
- Grey box correction
- Motorized focus
- Pre-programmed random strobe & pulse effects
- Dimmer: 0-100 %

Control and Programming

- Setting & Addressing: Robe Graphic Touch Screen (50 x 40 mm / 1.97" x 1.57")
- Protocols: USITT DMX-512, RDM, ArtNet, MA Net, MA Net2, sACN
- REAP™ - Robe Ethernet Access Portal
- Wireless CRMX™ technology from Lumen Radio - on request
- DMX Protocol modes: 1
- Control channels: 25
- RTC (real-time clock): built-in device to keep track of actual time in order to start and stop playback at given time
- Stand-alone operation

Content Management

- Upload and projection of custom artwork, still photographs and videos from USB memory stick
- Remote content management
- Internal storage: high speed internal memory for user content - 32 GB
- NAS client: automatic content synchronization tool
- Live video stream: from remote source

Movement

- Pan movement: 540°
- Tilt movement: 250°
- Movement control: Standard and Speed
- Controllable speed of Pan/Tilt movement
- Automatic Pan/Tilt position correction

Hardware

- Raspberry Pi, Model 3, 1GB

Operating System

- Linux OS

Thermal Specification

- Maximum ambient temperature: 40 °C (104 °F)
- Maximum surface temperature: 60 °C (140 °F)
- Minimum operating temperature: 0 °C (32 °F)

Electrical Specification and Connections

- Power supply: Electronic auto-ranging
- Input voltage range: 100-240 V, 50/60 Hz
- Power consumption: 140W
- Power in/out connector: Neutrik powerCON TRUE1 in/out
- DMX and RDM data in/out: Locking 5-pin XLR
- Ethernet port in/out: RJ45
- 2x USB 2.0 connector (series A)
- External video input 1x High Definition Multimedia Interface
- Embedded Ethernet switch 10/100 Mbps: 1x in / 1x out

Approvals

- CE Compliant
- cETLus Compliant

Mechanical Specification

- Height: 508 mm (20") - head in vertical position
- Width: 328 mm (12.91")
- Depth: 283 mm (11.14") - base with stage covers
364 mm (14.3") - base with installation covers
- Weight: 12 kg (26.46 lbs)

Rigging

- Mounting points: 1 pair of 1/4-turn locks
- 1x Omega adaptor with 1/4-turn quick locks
- Universal operating position
- Safety cable attachment point

Included Items

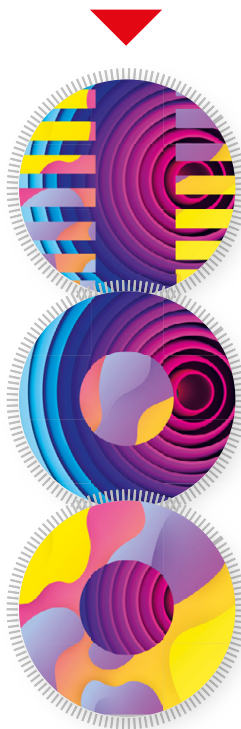
- User Manual
- Omega Adaptor CL-regular: 2 pcs 10980033
- Power cord including powerCON TRUE1 In connector

Graphic, Colour



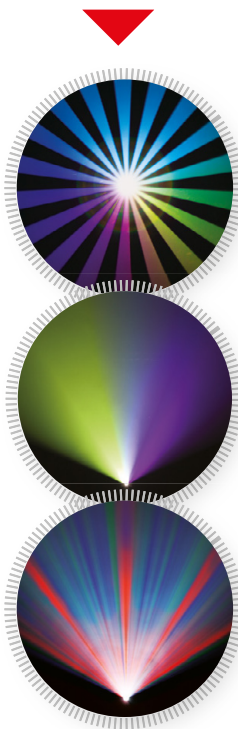
Gobo Transition

Simple to use preprogrammed automatic gobo transition can easily be selected. Automatic transition feature can be combined with gobo auto playback for super quick setup.



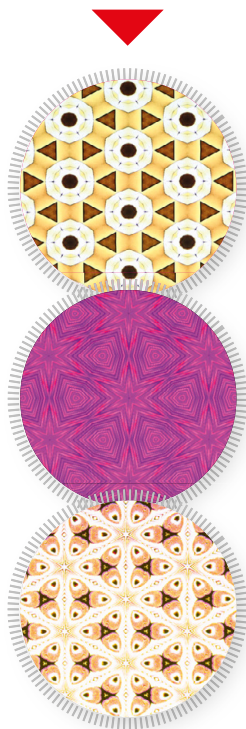
Mid-Air Effects

The ProMotion™ internal effect engine can generate spectacular mid-air animations with colourful laser like beams.



Kaleidoscopic Effects

The Kaleidoscopic effects allow the user to generate many new and appealing graphical effects from the current content.



Optional Accessories

- Doughty trigger clamp: 17030386
- CRMX Wireless Receiver: 13030894
- Safety wire 35 kg: 99011963
- Wide angle lens 26°: 10980547
- Installation base covers black: 10980548
- Ceiling mounting kit black: 10980551
- Daisy Chain powerCON TRUE1 In/Out, EU, 2m, Indoor: 13052439
- Daisy Chain powerCON TRUE1 In/Out, US, 2m, Indoor: 13052440
- Daisy Chain powerCON TRUE1 In/Out, EU, 5m, Indoor: 13052444
- ADM™ Automatic distance meter: 10980549
- Single top loader case: 10120265
- Quad top loader case: 10120266
- Foam shell: 20020378

Legal

- ProMotion™ is a Trademark of Robe lighting s. r. o.
- ProMotion™ is patented by Robe lighting s. r. o. and protected by one or more pending or issued patents

and Dynamic Effects

Colour Modifying

Colour modification has never been easier. By applying colour filters, colour keying or masking effects one can achieve quick and powerful colour transmutations.



Picture & Movie

The ProMotion™ micro-media server supports MPEG4 and H264 video formats as well as JPEG image files (max. 1920 x 1080 pixel). Includes factory media content and custom artwork. Still photographs and video can also be simply uploaded for projection.



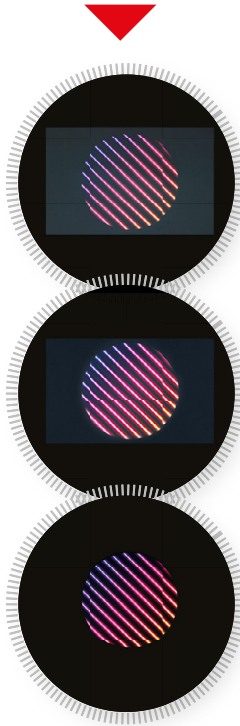
Digi Iris

Digi Iris is a flexible masking tool that changes the shape of the image or video. Various shapes are available as well as hard/soft edge iris types.



Grey Box Correction

This effect allows you to trim digital black edges when using a gobo projection or other non-fullscreen content.



Keystoning

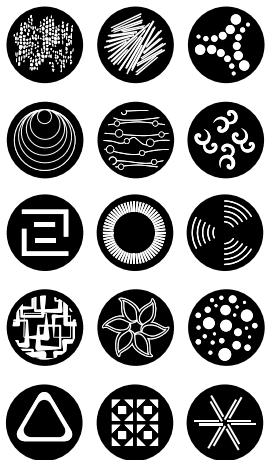
ProMotion™ provides a full set of keystone parameters. Picture distortion can be corrected in X and Y directions. Special Auto Keystoning feature can correct the image during pan and tilt movement.



Digital Gobo Wheels

Digital Gobo Wheel

Standard digital gobo wheel contains 100 images, 100 videos and 50 black and white gobos, while the user's digital gobo wheel is supplied with just examples of images and videos of various different applications.



Examples of in-built digital content



Remote Content Management

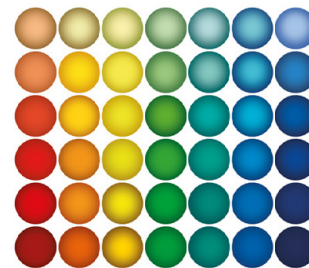
Remote Content Management allows custom media content to be easily managed in large number of ProMotion™ devices simultaneously, and remotely, without the need for anyone to be present. This is an ideal solution for retail applications where content can be regularly updated in a chain of stores, shopping centers, car showrooms, bowling centers, sports facilities, restaurants, bars and clubs.

The Management system works from any desktop or mobile platform simply by using a web browser, either via wired Ethernet network or by utilizing wireless Access Point, built directly into ProMotion™. RCM provides facilities for uploading, viewing and removal of content media files. Automatic synchronization of content ensures content consistency across the fleet of devices, and has been designed to allow for the addition of further devices to the installation, without the need to perform any further content management.

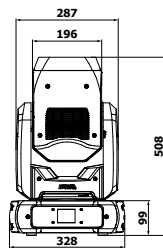
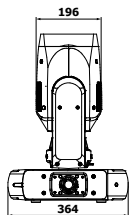
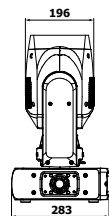
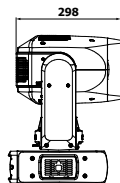


LED colours

RGB LED source is able to produce 16.7 million colours.



Product diagrams

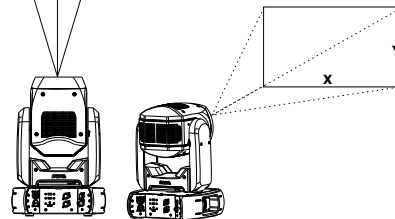


ProMotion™ - Illuminance/Image Size Chart Standard Lens (Throw distance ratio 3.5 : 1)

Illuminance - centre
(white output 7500K)

Image Size

118 lx 11 fc	14m (46')	X=4.0m (13.12') Y=2.25m (7.38')
137 lx 13 fc	13m (43')	X=3.71m (12.10') Y=2.08m (6.82')
161 lx 15 fc	12m (39')	X=3.43m (11.25') Y=1.93m (6.33')
192 lx 18 fc	11m (36')	X=3.14m (10.31') Y=1.78m (5.84')
232 lx 22 fc	10m (33')	X=2.86m (9.37') Y=1.61m (5.28')
286 lx 27 fc	9m (30')	X=2.57m (8.44') Y=1.45m (4.76')
362 lx 34 fc	8m (26')	X=2.29m (7.05') Y=1.29m (4.23')
473 lx 44 fc	7m (23')	X=2.0m (6.56') Y=1.13m (3.71')
643 lx 60 fc	6m (20')	X=1.71m (5.62') Y=0.96m (3.15')
927 lx 86 fc	5m (16')	X=1.43m (4.69') Y=0.80m (2.62')
1448 lx 135 fc	4m (13')	X=1.14m (3.75') Y=0.64m (2.10')
2575 lx 239 fc	3m (10')	X=0.86m (2.81') Y=0.48m (1.57')
5794 lx 538 fc	2m (7')	X=0.57m (1.87') Y=0.32m (1.05')





proMOTION™



www.robe.cz



Head office: ROBE lighting s. r. o. | Hážovice 2090 | 756 61 Rožnov pod Radhoštěm | Czech Republic

Factory: ROBE lighting s. r. o. | Palackého 416 | 757 01 Valašské Meziříčí | Czech Republic

Tel.: +420 571 751 500 | E-mail: robe@robe.cz