

iParFect 150™ FW RGBA

The all-new iParFect 150 FW RGBA features an exceptionally-wide zoom range and silent operation with passive cooling, making it ideal for theatres, concert halls and television. With an IP 65 rating, it is also perfect for any outdoor application.

**Light source**

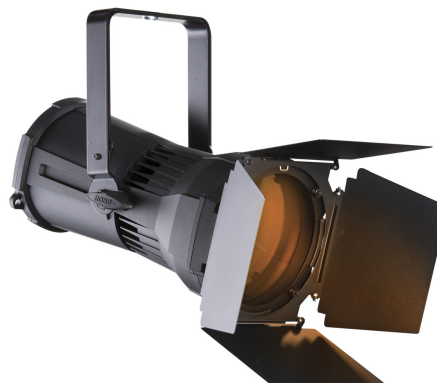
7x 40W RGBA multichips

**Light output**

1.310 lm, 5.300 lux @ 5 m

**Zoom range**

3,8° - 60°



The RGBA LED colour combination provides a high CRI and allows designers to produce warm, rich, amber tones that are normally difficult to achieve. Other features include smooth CMY & RGBA colour control, 18-bit dimming and Tungsten emulation, with both selectable & variable colour temperatures providing total output control.

The powerful, punchy beam with a zoom range of 3,8° to 60°, combined with a Fresnel style beam edge, results in a smooth, homogenised beam of light. This compact, lightweight fixture includes a combined hanging / floor stand bracket and accessories such as gel frame and barndoors.

Now equipped with Robe's innovative lens coating technology which brings benefits such as bright and clear lenses, no scratches or marks, higher light output and longer intervals between cleaning.

Technical Specification

Source

- Light source type: 7x 40W RGBA multichips
- LED life expectancy: min. 50.000 hours
- Typical lumen maintenance: L70/B50 @ 50.000 hours

Optical system

- Robe's proprietary optical design
- Innovative lens coating technology (Patent pending)
- High - efficiency zoom optical system, ratio 15,5:1
- Zoom range: 3.8° - 60°
- Fixture total lumen output: 1.310 lm
- Light output: 5.300lx @ 5 m

Dynamic Effects and Features

- Colour mixing mode RGBA or CMY
- Variable CTO: 2.700K - 8.000K
- Virtual Colour Wheel: with 66 preset swatches
- Tungsten lamp effect at whites: 2.700K and 3.200K (red shift and thermal delay)
- Motorized zoom
- Pre-programmed random strobe & pulse effects
- High resolution electronic dimming: 0 - 100%

Control and programming

- Setting & Addressing: two-row LCD display & 4 control buttons, stand-alone operation with 3 editable programs (each up to 25 steps)
- Protocols: USITT DMX-512, RDM
- Wireless CRMX™ technology from Lumen Radio - on request
- DMX Protocol modes: 2
- Control channels: 17, 11
- RGBW / CMY: 8 or 16 bit
- Zoom: 8 or 16 bit
- Dimmer: 8 or 16 bit (internal 18 bit)

Thermal specification

- Maximum ambient temperature: 40°C (104°F)
- Maximum surface temperature: 80°C (176°F)
- Minimum operating temperature: -10°C (14°F)

Electrical specification and connections

- Power supply: Electronic auto-ranging
- Input voltage range: 100-277 V, 50/60 Hz
- Power consumption: Max. 220 W
- Power in/out connector: IP 65 Neutrik powerCON TRUE1 in/out
- DMX and RDM data in/out: Locking 5-pin XLR

Approvals

- CE Compliant
- cETLus Compliant

Mechanical specification

- Height: 235 mm (9.2")
- Width: 251 mm (9.9")
- Depth: 413 mm (16.3") without hanging bracket / 489 mm (19.3") with hanging bracket
- Weight: 7.3 kg (16.1 lbs)
- Ingress protection rating: IP65

Rigging

- Mounting horizontally or vertically via mounting yoke
- Universal operating position
- Safety cable attachment point

Included items

- User Manual

Optional accessories

- Gel frame: 10980372
- Barndoor module: 10980349
- Doughty Trigger Clamp: 17030386
- Safety wire 36 kg: 99011963
- Single Top Loader Case: 10120238
- Six Pack Top Loader Case: 10120239

- Eight Pack Top Loader Case: 10120240
- Line cords powerCON In/Out

Legal

- iParFect 150™ is a trademark of Robe lighting s. r. o.
- iParFect 150™ FW RGBA is patented by Robe lighting s. r. o. and is protected by one or more pending or issued patents